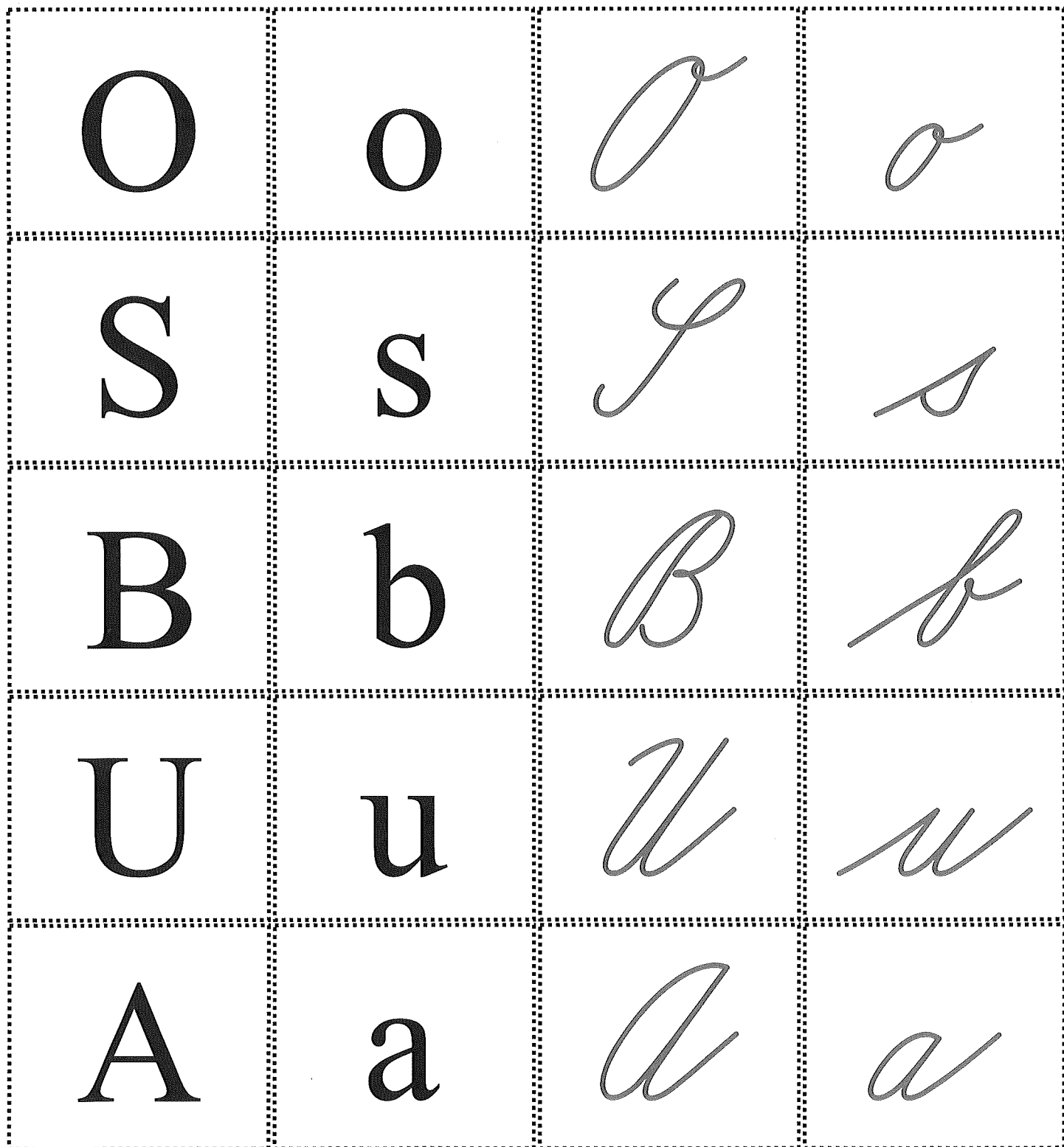


Abecevní kniha

6

Písmena strana: 5, 23, 43, 63, 85

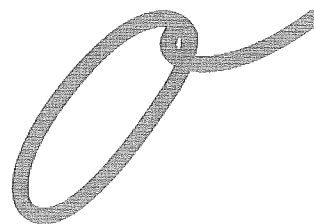
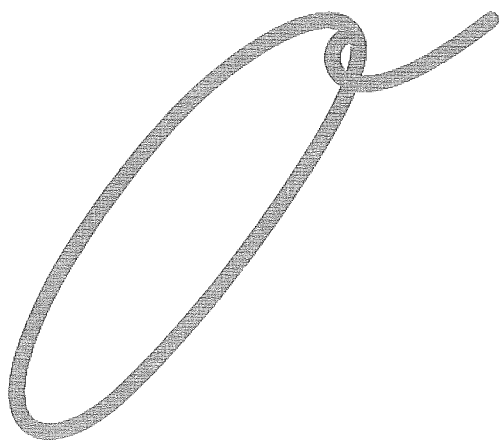
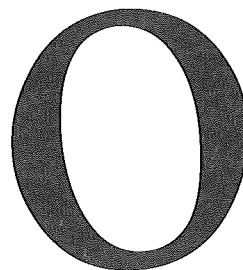
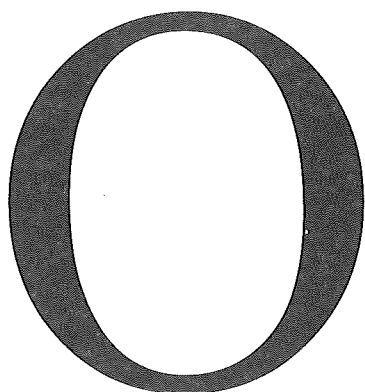


Karty do ruky

1

Písmena strana: 4

Doporučujeme nalepit na čtvertku.



Karty do ruky

2

Písmena strana: 22

Doporučujeme nalepit na čtvertku.

S

s

S

s

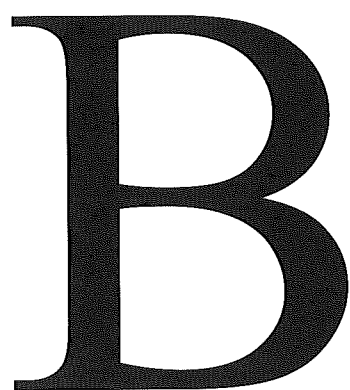
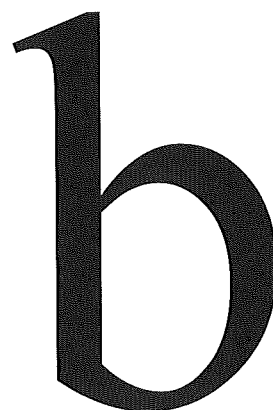
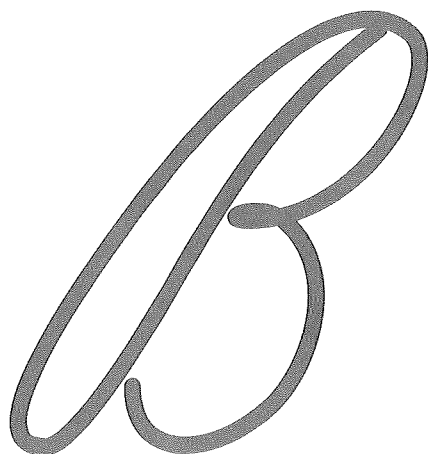



Karty do ruky

3

Písmena strana: 42

Doporučujeme nalepit na čtvrtku.

A large, bold, black uppercase letter 'B' in a serif font, centered within a square frame defined by a dotted line.A large, bold, black lowercase letter 'b' in a serif font, centered within a square frame defined by a dotted line.A large, grey uppercase letter 'B' in a cursive script, centered within a square frame defined by a dotted line.A large, grey lowercase letter 'b' in a cursive script, centered within a square frame defined by a dotted line.

Karty do ruky

Písmena strana: 62

Doporučujeme nalepit na čtvertku.

U

u

U

u

Karty do ruky

5

Písmena strana: 84

Doporučujeme nalepit na čtvertku.

A

a

A

a

